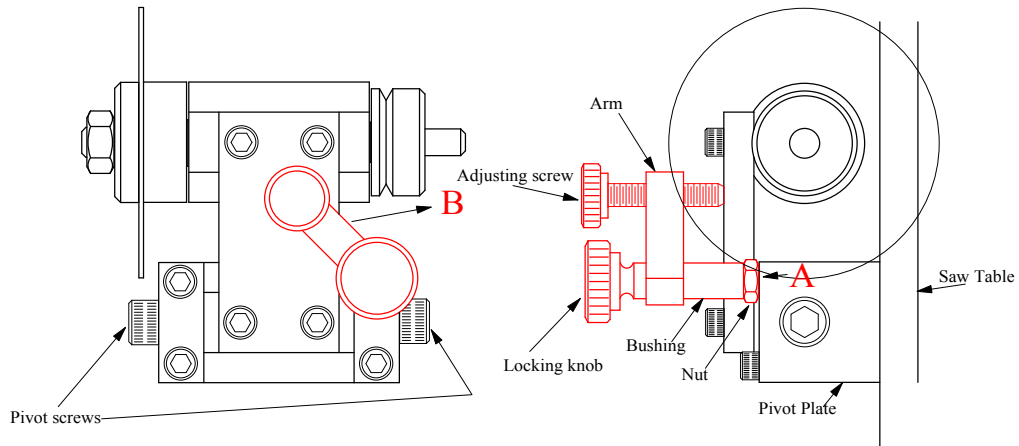


Instructions for mounting Blade Elevating Screw (in red)



- 1 - Remove 8-32 x 1 1/4" Socket Cap Screw from Pivot Plate (A)
- 2 - Screw 8-32 threaded rod into saw table thru Pivot Plate till rod is short of coming thru table
- 3 - Tighten nut to lock pivot plate in place
- 4 - Place bushing then arm over threaded rod
- 5 - Lock in place with knurled knob locating as in drawing
- 6 - Position blade height with smaller knurled knob (adjusting screw) after loosening two pivot screws
- 7 - Tighten pivot screws when blade is at correct height
- 8 - To change blades loosen larger knurled knob and swing unit out of way (B) in order to lower blade enough to remove

**Preac Tool Co., Inc.**  
**Blade Elevating Screw (Inst.)**

1596 Pea Pond Road  
 N. Bellmore, NY 11710-2956 11/24/99 CRF